

LEGEND



Tenant Space calculated

Architectural in square feet (from exterior face of building to center of tenant demising walls and to tenant side of core space walls)

Paint-to-Paint in square feet (to face of finished wall)

Calculations are based on tenant demising walls constructed of 5/8" gypsum wallboard each side of 6" metal studs

STUDY 1 CALCULATIONS

Floor Lease Area:	7874 / 7630 sf
Core Area:	1614 / 1332 sf
Total Floor Area:	9488 / 8962 sf
Square feet lost in walls:	536 sf

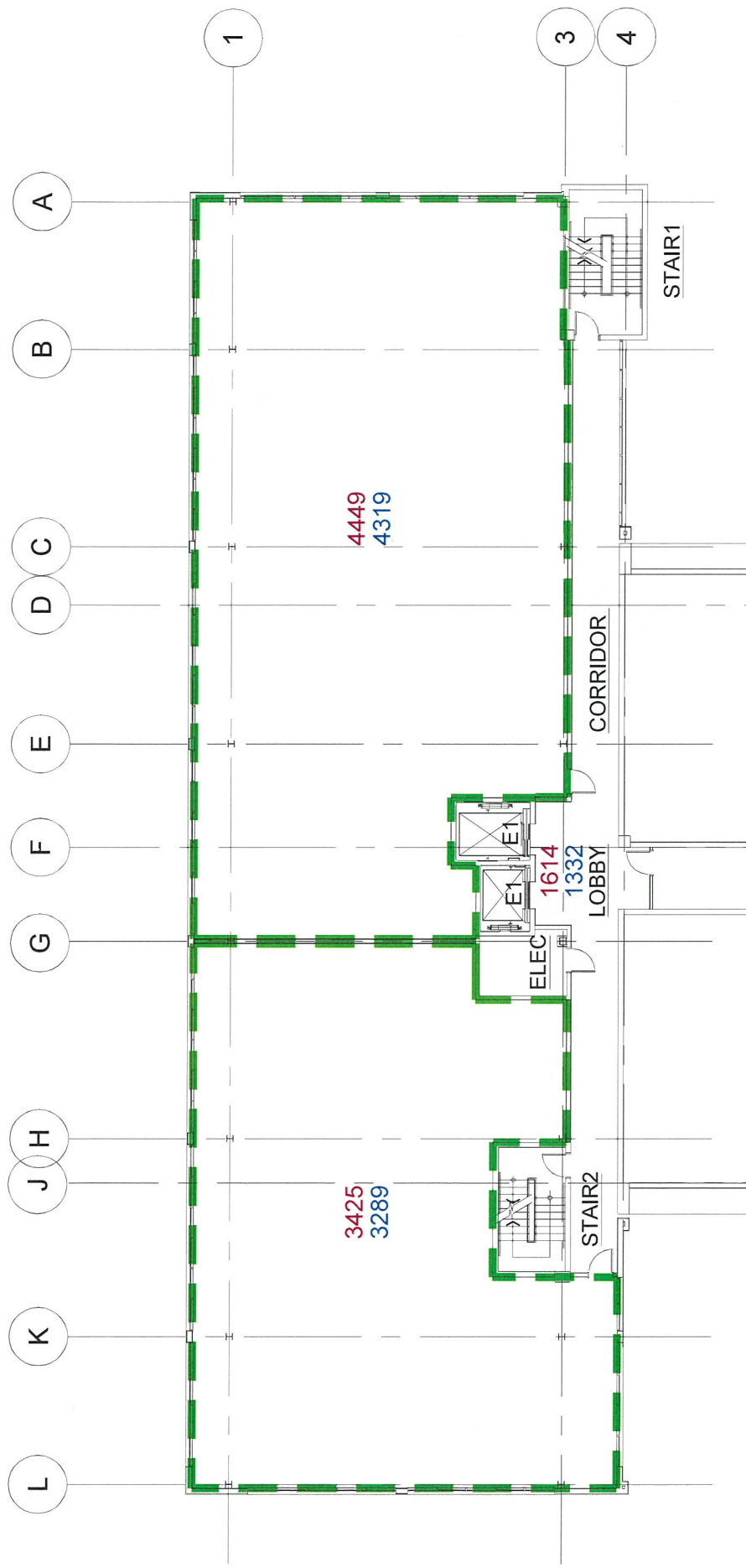
MARY SAVIO MEDICAL PLAZA AIEA PEARL CITY
TENANT SPACE STUDY WITH ESTIMATED SQUARE FOOTAGES

mga
 Architecture

0' 10' 20' 40' 80'

SCALE: 1"=20'

February 22, 2018



LEGEND

--- Tenant Space calculated

Architectural in square feet (from exterior face of building to center of tenant demising walls and to tenant side of core space walls)

Paint-to-Paint in square feet (to face of finished wall)

Calculations are based on tenant demising walls constructed of 5/8" gypsum wallboard each side of 6" metal studs

STUDY 2 CALCULATIONS

Floor Lease Area:	7874 / 7608 sf
Core Area:	1614 / 1332 sf
Total Floor Area:	9488 / 8940 sf
Square feet lost in walls:	548 sf

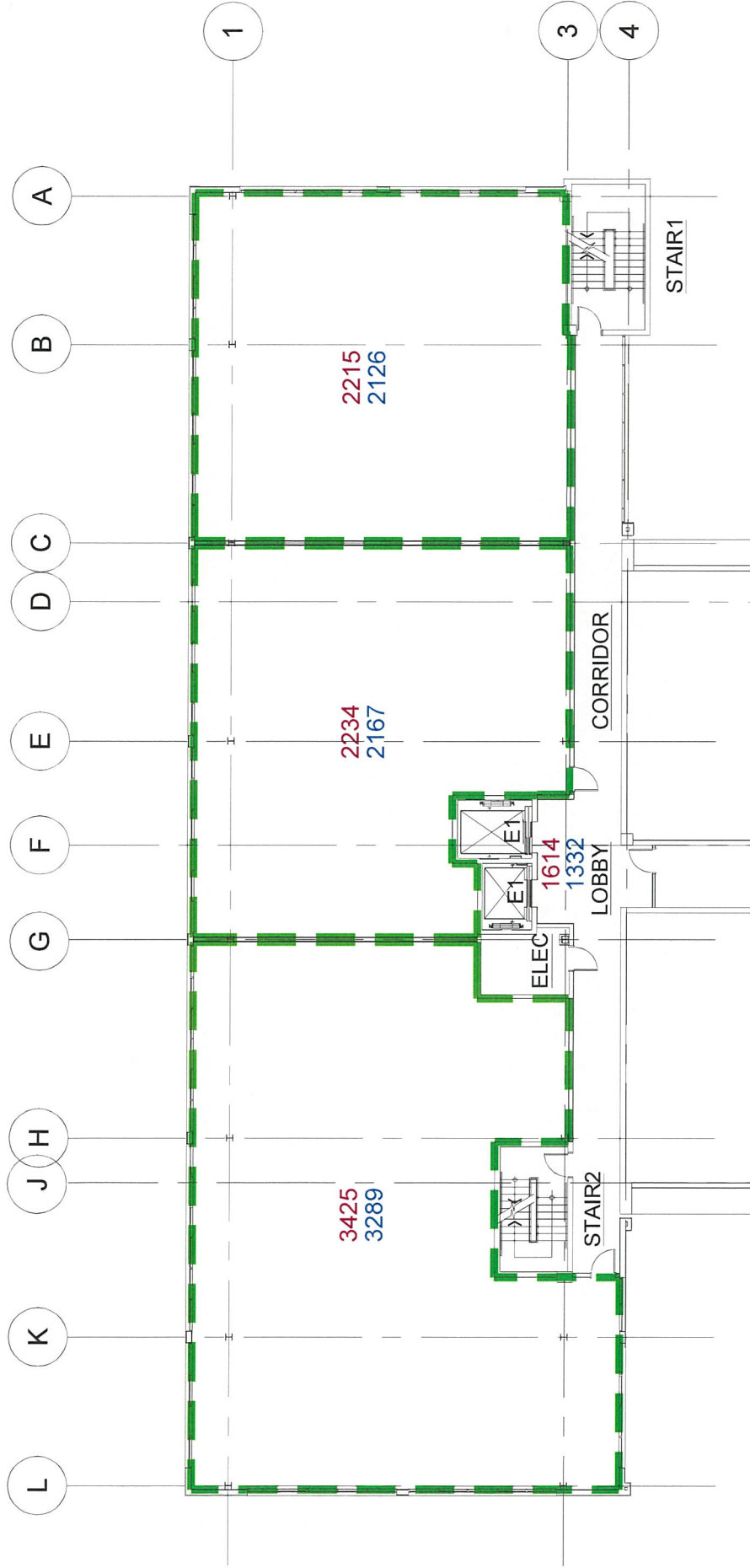
MARY SAVIO MEDICAL PLAZA AIEA PEARL CITY
TENANT SPACE STUDY WITH ESTIMATED SQUARE FOOTAGES

mga
 Architecture

0' 10' 20' 40' 80'

SCALE: 1"=20'

February 22, 2018



LEGEND

 Tenant Space calculated

Architectural in square feet (from exterior face of building to center of tenant demising walls and to tenant side of core space walls)

Paint-to-Paint in square feet (to face of finished wall)

Calculations are based on tenant demising walls constructed of 5/8" gypsum wallboard each side of 6" metal studs

STUDY 3 CALCULATIONS

Floor Lease Area:	7874 / 7582 sf
Core Area:	1614 / 1332 sf
Total Floor Area:	9488 / 8914 sf
Square feet lost in walls:	574 sf

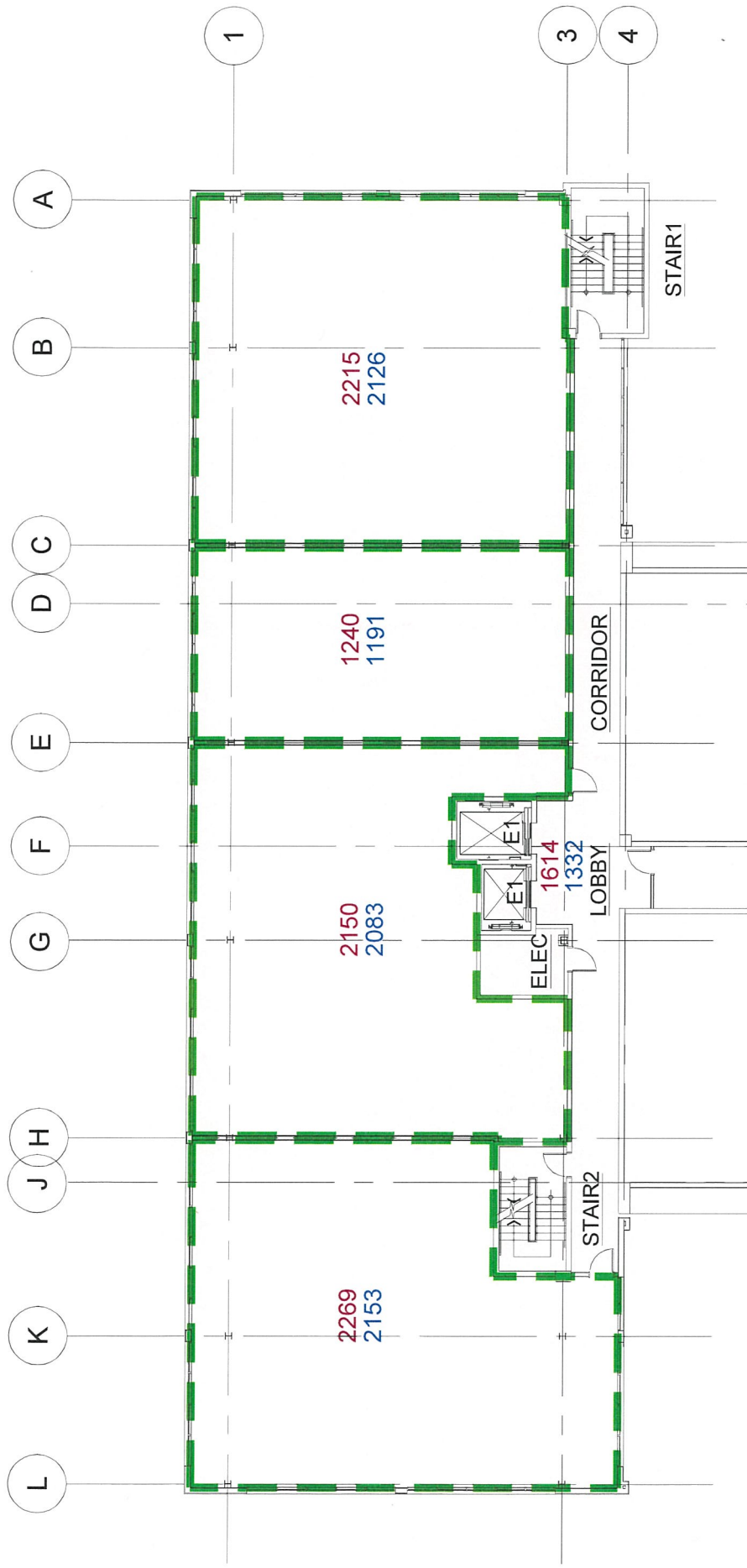
MARY SAVIO MEDICAL PLAZA AIEA PEARL CITY

TENANT SPACE STUDY WITH ESTIMATED SQUARE FOOTAGES

mga Architecture

0' 10' 20' 40' 80'

SCALE: 1"=20'



STUDY 4 CALCULATIONS

Floor Lease Area: 7874 / 7553 sf
Core Area: 1614 / 1332 sf

Total Floor Area: 9488 / 8885 sf

Square feet lost in walls: 603 sf

LEGEND



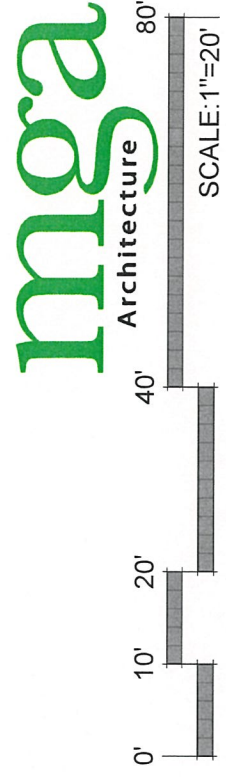
Architectural in square feet (from exterior face of building to center of tenant demising walls and to tenant side of core space walls)

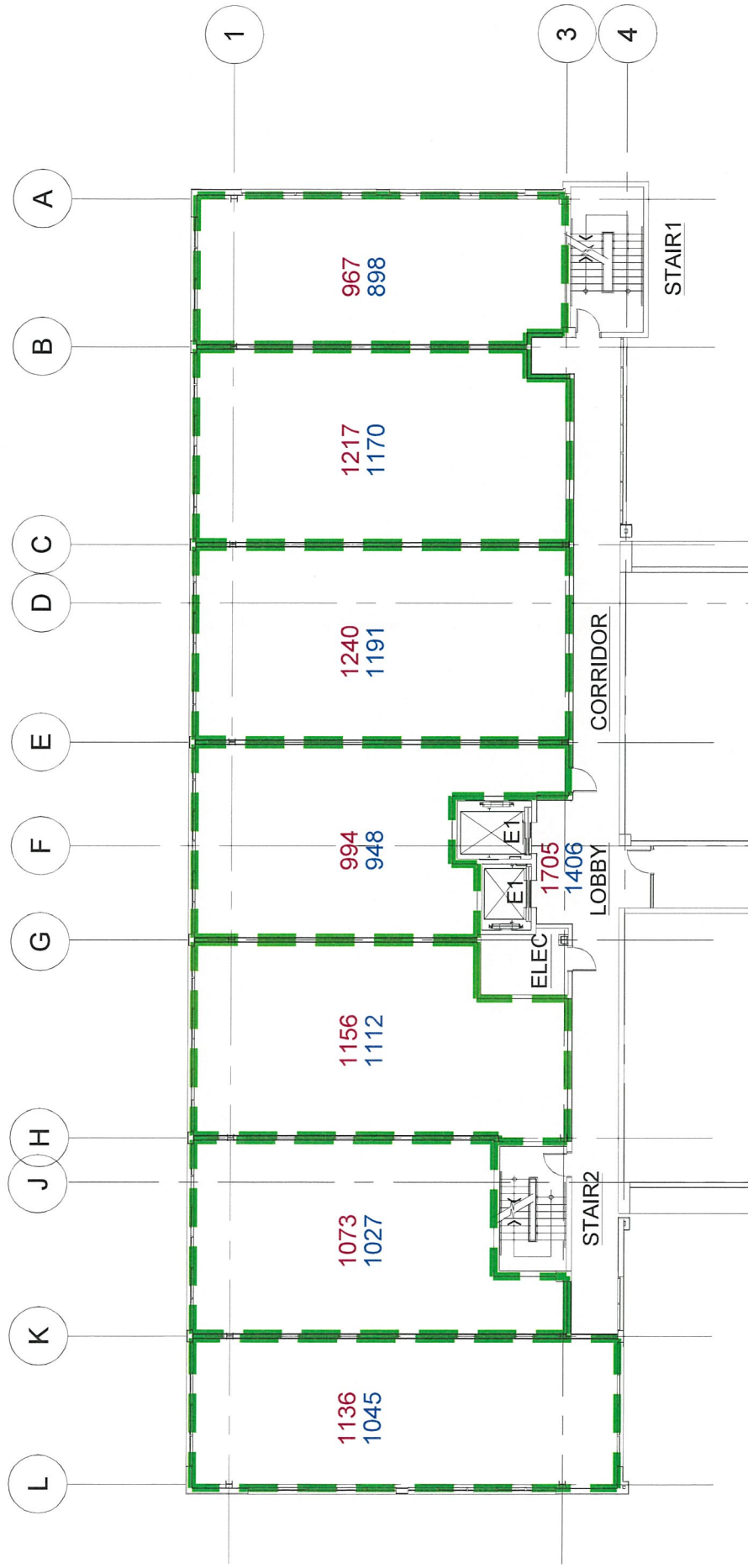
Paint-to-Paint in square feet (to face of finished wall)

Calculations are based on tenant demising walls constructed of 5/8" gypsum wallboard each side of 6" metal studs

MARY SAVIO MEDICAL PLAZA AIEA PEARL CITY
TENANT SPACE STUDY WITH ESTIMATED SQUARE FOOTAGES

February 22, 2018





LEGEND



Tenant Space calculated

Architectural in square feet (from exterior face of building to center of tenant demising walls and to tenant side of core space walls)

Paint-to-Paint in square feet (to face of finished wall)

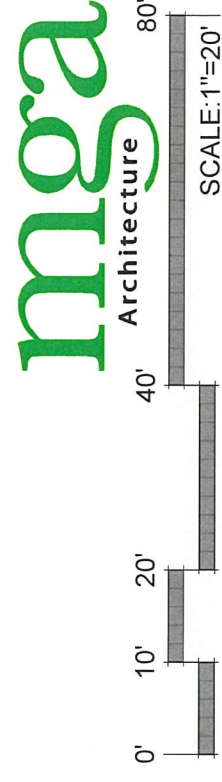
Calculations are based on tenant demising walls constructed of 5/8" gypsum wallboard each side of 6" metal studs

STUDY 5 CALCULATIONS

Floor Lease Area:	7783 / 7391 sf
Core Area:	1705 / 1406 sf
Total Floor Area:	9488 / 8797 sf
Square feet lost in walls:	691 sf

MARY SAVIO MEDICAL PLAZA AIEA PEARL CITY

TENANT SPACE STUDY WITH ESTIMATED SQUARE FOOTAGES



February 22, 2018